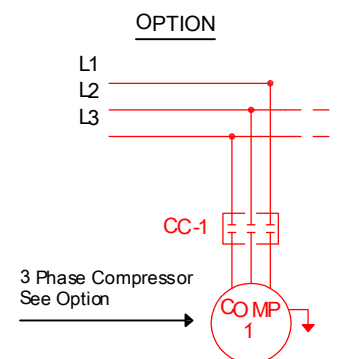
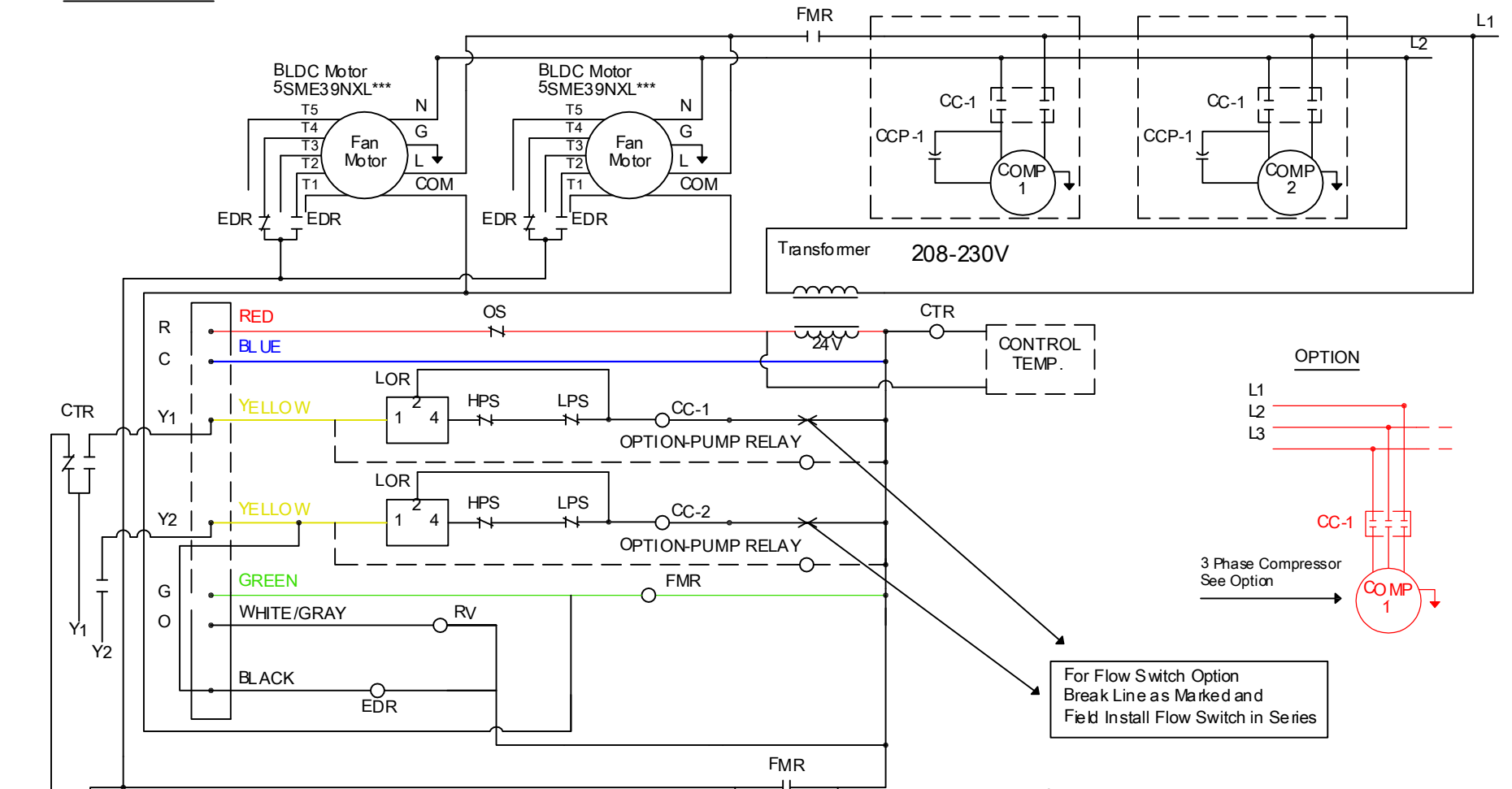


2 Speed NO Board

208-230V/1/60

2 COMP 2 CIRCUIT - SINGLE PHASE



For Flow Switch Option
Break Line as Marked and
Field Install Flow Switch in Series

LEGEND		CTR - CONTROL TEMP. RELAY
TR - TRANSFORMER	FMC - FAN MOTOR CAPACITOR	
COMP - COMPRESSOR	LPS - LOW PRESSURE SWITCH	
CC - CONTACTOR	LOR - LOCK OUT RELAY	
CCP - COMPRESSOR CAPACITOR	HPS - HIGH PRESSURE SWITCH	
FM - FAN MOTOR	OS - CONDENSATE OVER-FLOW SWITCH	
FMR - FAN MOTOR RELAY	RV - REVERSING VALVE	

LEGEND

COMP - Compressor
 CC - Contactor
 CCP - Compressor Capacitor
 EDR - Enhance Drying Relay
 FMR - Fan Motor Relay

**FAN MOTOR WIRES/SPEEDS

- BLACK - HIGH SPEED
- BLUE - MEDIUM SPEED
- RED - LOW SPEED

**For Non BLDC Motor & When Applicable

NOTES: Compressor & blower motor internally thermally protected. For line voltage wiring use copper conductors only. All wiring to the unit must comply with local electrical codes.

